

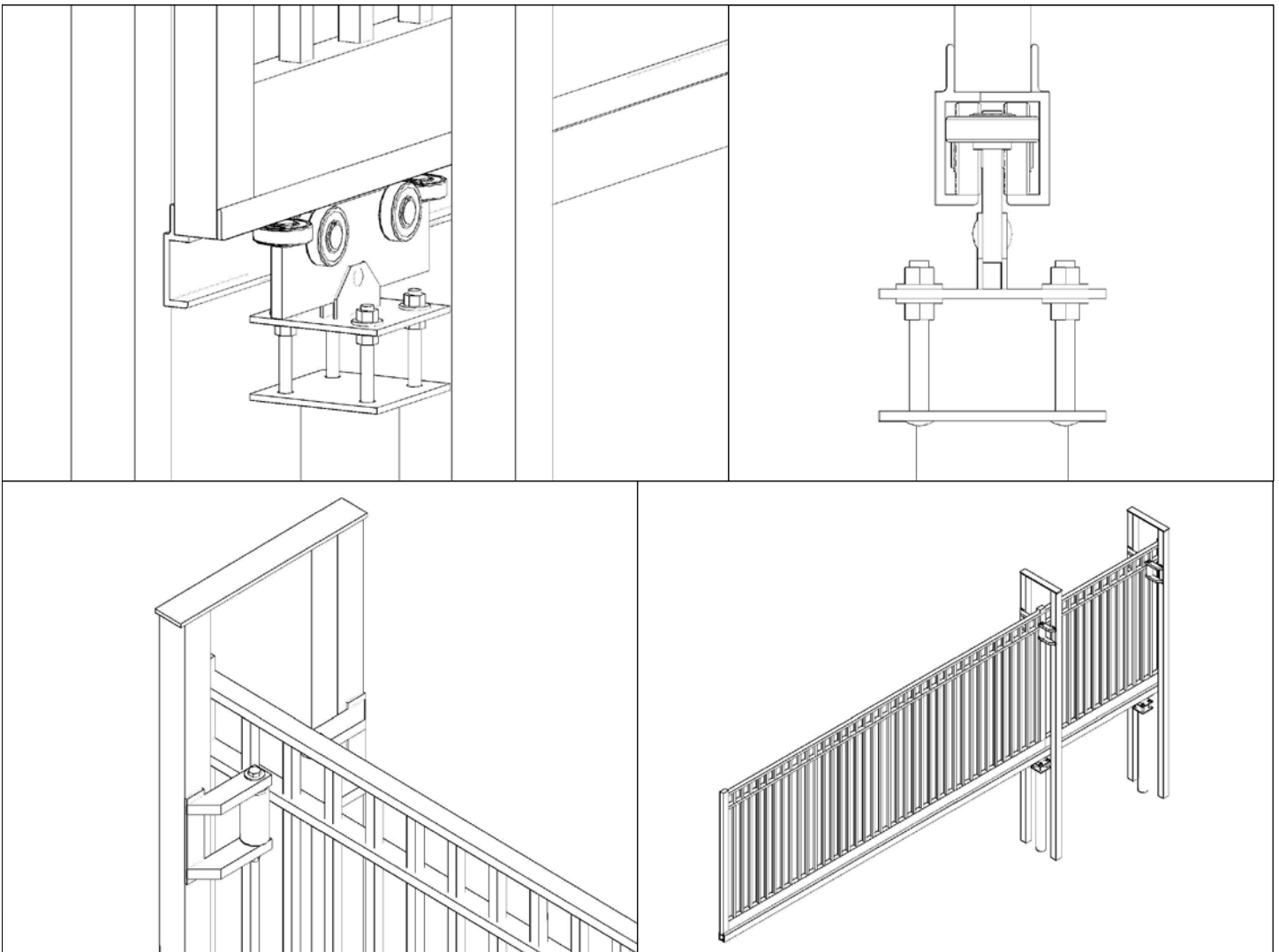
# INSTALLATION INSTRUCTIONS

# iDeal

aluminum

fence gates railing

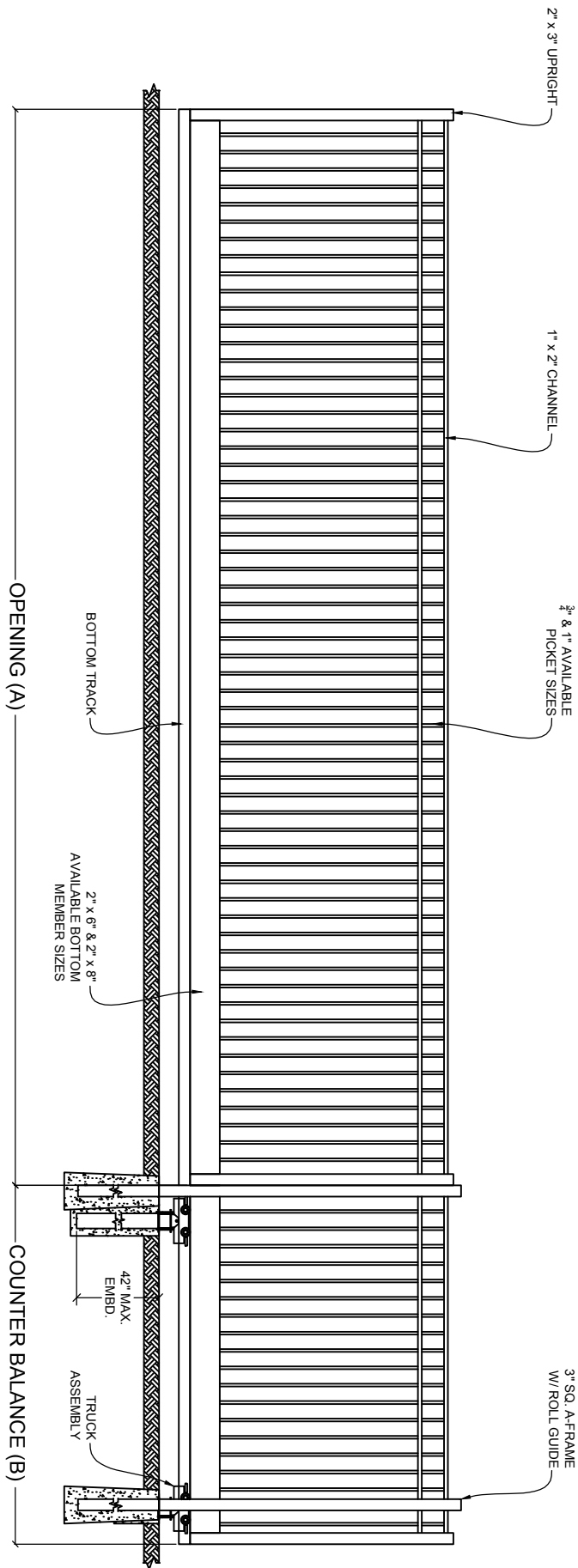
## BOTTOM TRACK CANTILEVER



# Ideal Aluminum Products Bottom Track Cantilever Installation Instructions

## Table of Contents

1. Preparation.....	4
2. Install Directions.....	5
• Support Posts.....	5
• Truck Assembly.....	6
• A-Frame.....	7
3. Final Work / Maintenance.....	8



www.ideal-ap.com  
 This drawing is the property of Ideal Aluminum Products.  
 It is not to be reproduced, copied, or traced  
 in whole or in part without written consent.



# Preparation

**Statements in Manufacturer’s Instructions Concerning Installation Gate and fence dealers can expect to see in gate operator instructions the following statements:**

- The operator must be appropriate for the construction of the gate and the usage class of the gate. The appropriate primary and secondary safety devices to be used are a major consideration to support this requirement.
- All openings of a horizontal slide gate, and the portion of the fence where the slide gate passes, must be guarded or screened. These specific requirements in UL 325 that govern this provision were developed to address “reach-through” occurrences. For example, slide gates must have a protective cover 48 inches in height extending from the bottom of the gate/fence panel.
- All exposed entrapment points must be eliminated or guarded. It is up to individual gate and fence dealers to identify these points on a product-by-product basis, or on a job-by-job basis.
- Guarding must be supplied for exposed rollers. Exposed rollers are regarded as potential pinch points.

## Factors Related to Gate Construction and Installation

- Vehicular gate operators should ONLY be used on vehicular gates and never pedestrian gates.
- Adequate clearance should be provided between a swinging gate and adjacent structures to reduce risk of entrapment.
- A sliding gate should work smoothly with easy rolling/movement in both directions, prior to the installation of the operator.
- Controls should be as far away from the gate as possible, at least 6 feet from the gate, to prevent “reach-through” occurrences.
- Warning signs and placards must be installed and be visible in the area of the gate.

## Gate and Fence Dealer Documentation Suggestions

In dealing with the effects of the new provisions, here are some suggestions gate and fence dealers may consider to expand their documentation of gate projects. One possibility is to visually document, either via photography or video, the complete gate installation including applicable signs and labels, and the owner receiving the instruction manual from the installer. Other options could include the development and use of an installation checklist, a customer sign-off form, and a service/preventive maintenance contract.

### Check list

#### Required Tools:

- Tape Measure
- String Line
- Level
- Screw Gun - with 1/4” and 5/16” Nut Driver
- 12” Adjustable Wrench
- 9/16” Wrench and Socket
- 3/4” Wrench and Socket
- 15/16” Wrench and Socket

#### Hardware Kit:

- (2) Support Posts
- (2) Truck Assemblies
- (2) Roller Brackets
- (2) Rollers (6” or 12” for arched gate)
- (1) V-Catch
- (2) Lock Nuts
- (2) Washers
- (2) 1-1/2” x 1-1/2” bolt
- (2) 5” Stop Bolts
- (2) 14” x 1-1/2” screws
- (2) 4” hex head bolts

## Setting Support Posts

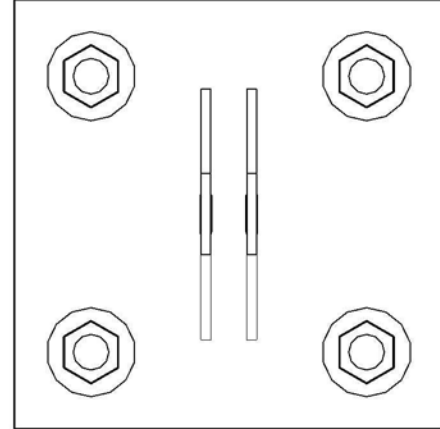
Setting of the support posts is critical to the alignment and height of gate. Prior to setting posts take note of environment, elevation changes and any obstacles that must be avoided in area where gate is located.

Support post adjustment bolts will allow for 3" vertical adjustment.

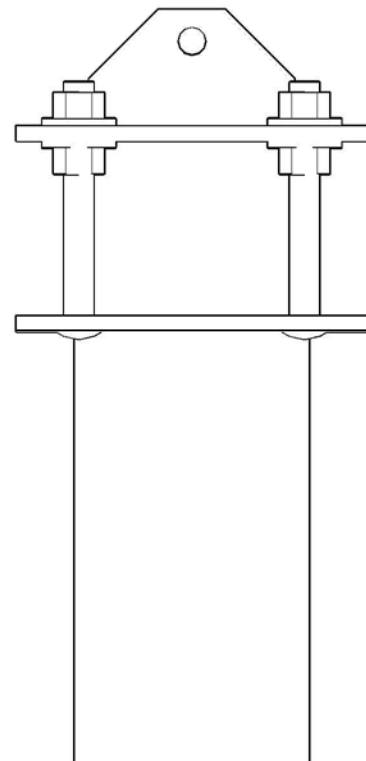
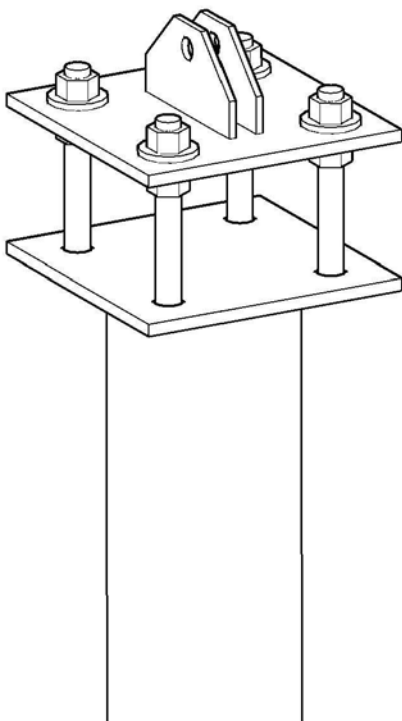
The length of the counter balance on your gate will determine spacing of support post. It is recommended that you measure the counter balance of your gate first.

The front support post should be set 9" from the opening, to the center of support post. The rear support post should be set 9" from the rear of gate (closed position) to center of support post. The objective is to have both posts within the counter balance and as far a part as possible. When properly installed, the support posts should be 18" (center line dim.) less than the length of counter balance.

To set support posts dig footer holes appropriately to accommodate support post. Footer holes should be "bell shaped" (wider bottom).



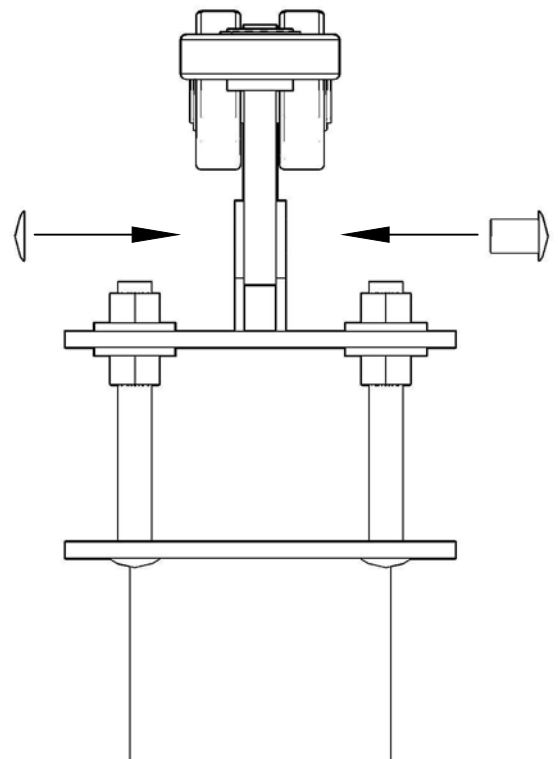
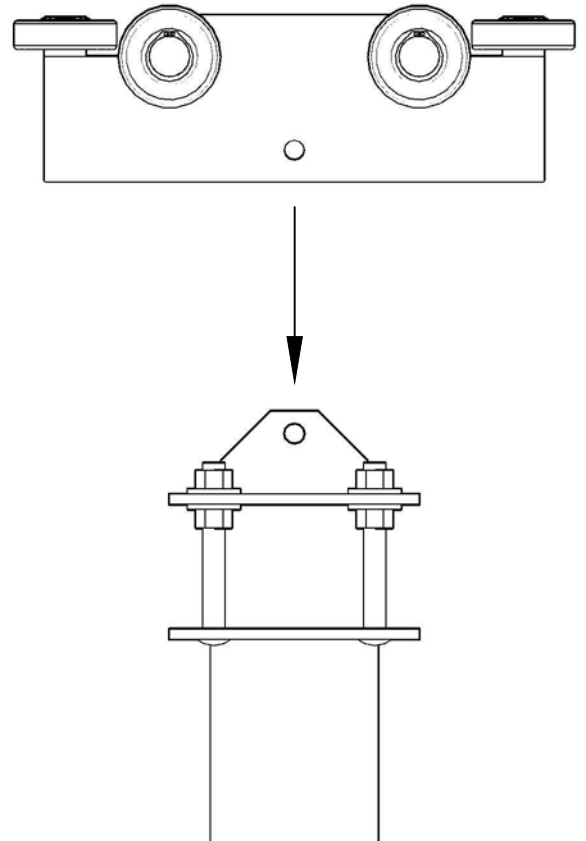
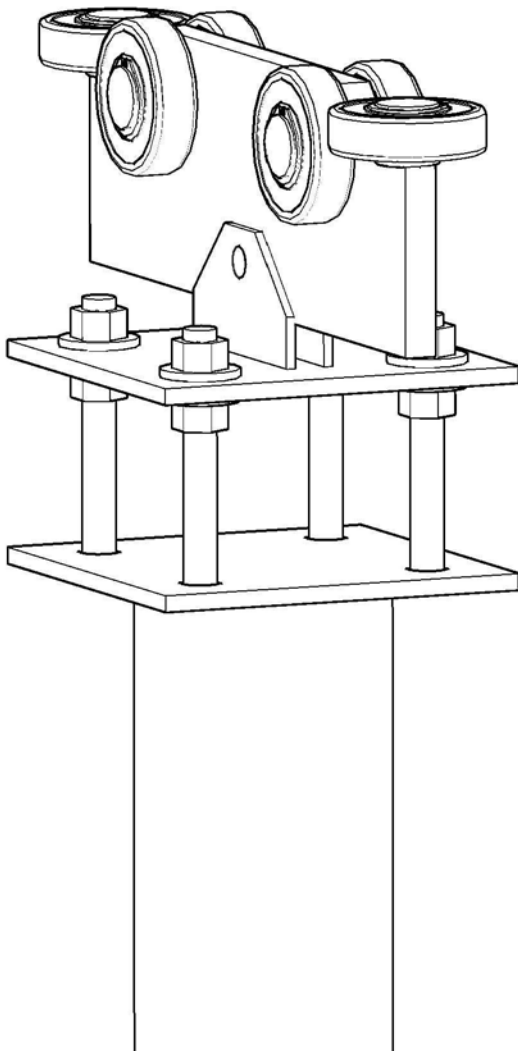
Support Post



## Install Truck Assembly

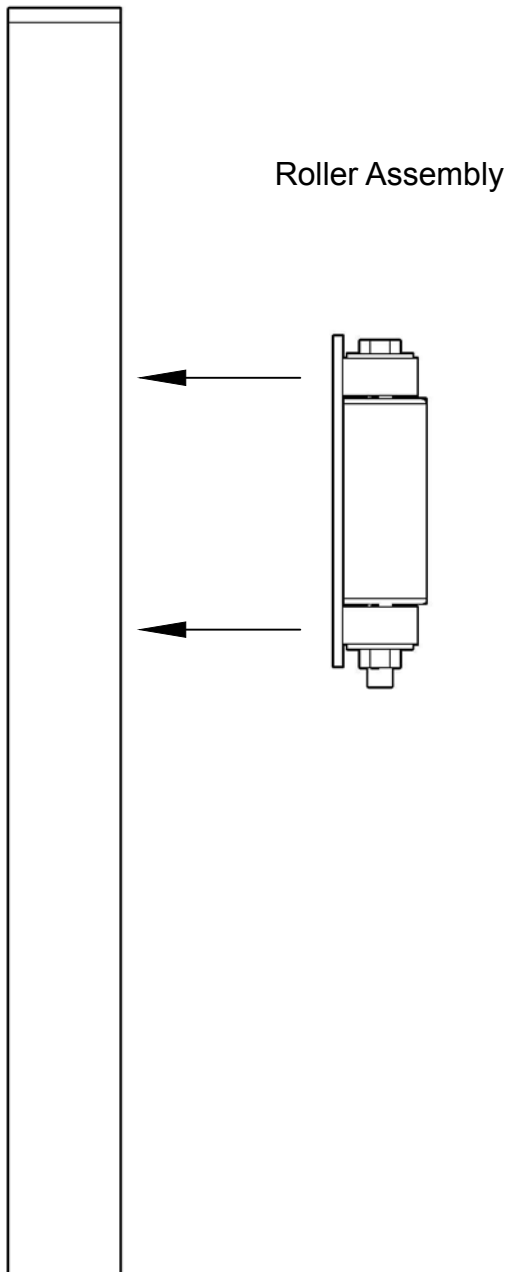
After concrete has hardened, attach the truck assembly to the top plate of support post. Do not over tighten bolts; the truck assembly should be free to move up and down. Set the top plate of support post to desired height (according to ground elevations). Support posts must be level with one another. Your gate is now ready to slide in to place.

Truck Assembly

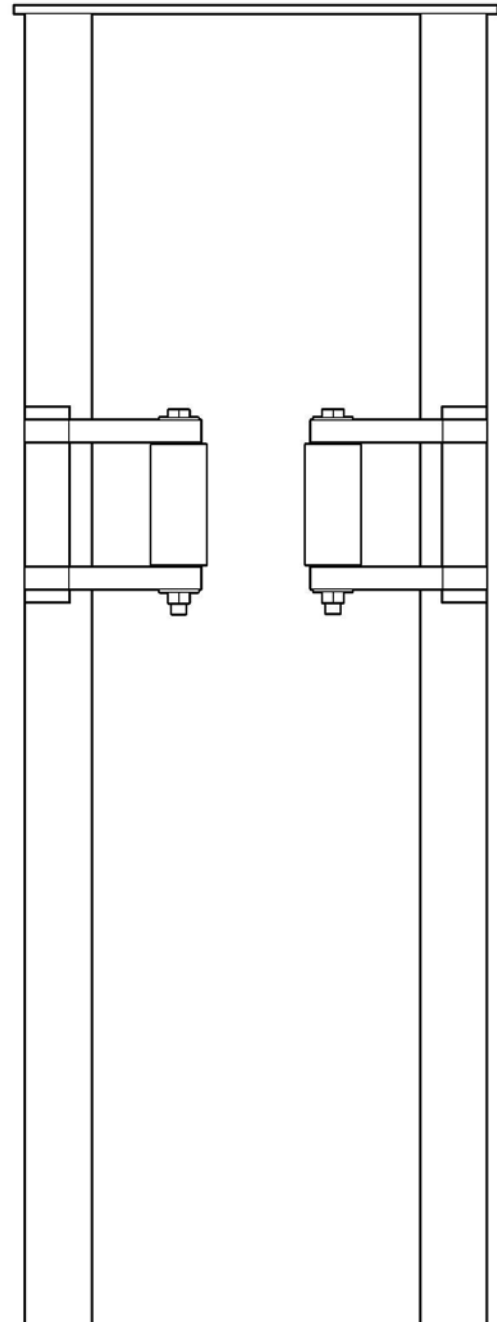


## Setting A-frame

The A-frame and roll guides are designed to help keep gate upright, as well as guide the gate in opening and closing. The A-frame should be placed within counter balance area and as close to the opening as possible. Gates with openings exceeding 22ft. shall receive (2)A-frames. If (2) A-frames are required, the rear A-frame should be placed as close to the rear of the counter balance (gate in closed position) as possible.



## A-Frame



## Setting Guide Rollers

Be sure your gate is plumb and install your roller guide assembly and rollers. Position rollers to guide horizontal gate rails. Use a 11" gap between your gate and rollers. Do not press rollers tightly against gate, this will cause the gate operation to be stiff. Make final adjustments to the support post adjustment bolts, if necessary. To level gate or adjust overall height.

# Final Work

## Quick Check List

- Inspect that the truck assemblies are level.
- Inspect that all nuts are secured tightly.
- Inspect that the gate is plumb and level
- Check that the guide rollers spin on trucks with minimal force. If the rollers are too tight to the gate it will apply too much pressure on the rollers causing premature failing. If the rollers are too far away from the gate it will cause the gate to rock side to side putting extra pressure on the truck assembly and gate will not be plumb.
- A sliding gate should work smoothly with easy rolling/movement in both directions, prior to the installation of the operator. Test for any binding when sliding gate in full open position and closed position.
- Warning signs and placards must be installed and be visible in the area of the gate.

## Maintenance

- Gates should be maintained every 6 months.
- Clear any debris away from the gate and truck assemblies.
- Inspect the truck assemblies for damage or excessive wear.
- Inspect the guide rollers for damage or excessive wear.
- Inspect the v-catch assembly for proper alignment.
- Repeat all of the steps from the Quick Check List above.