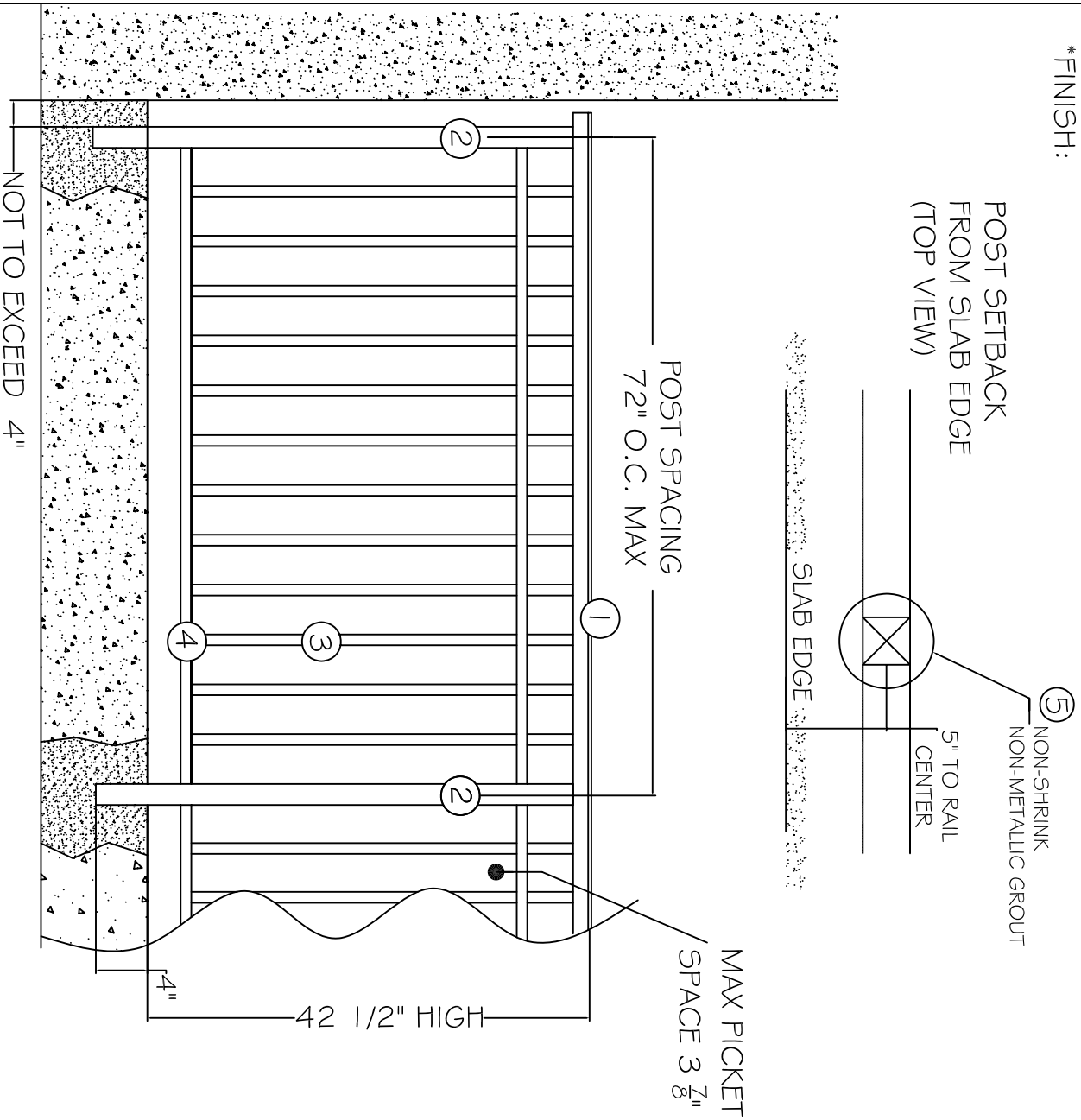
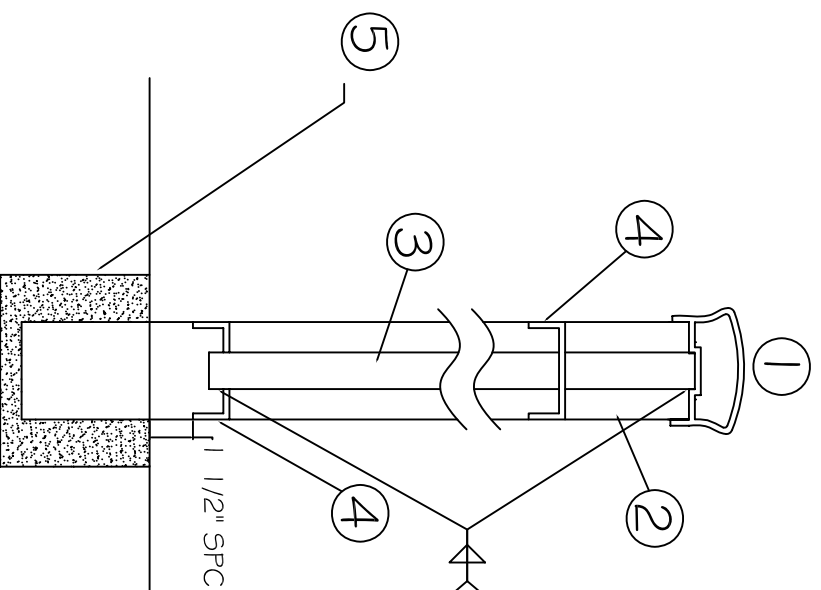


NOTES:
 * DESIGN COMPLIES W/ SEC 1009 & 1607.7 OF 2006 IBC
 & NFPA 101 1997 ED.
 * ALL-WELDED ALUMINUM RAIL SYSTEM
 * FINISH:



SECTION THRU



MATERIAL (6063-T5)	WALL
① 2 5/8" x 1 1/2" TOP CAP	.093"
② 2x2" SQ. POST(6005-T6)	.125"
③ 3/4" SQ. PICKETS	.062"
④ 2x1" CHANNELS	.125"
⑤ NON-SHRINK NON-METALLIC GROUT	

www.idealaluminumproducts.com
 Ideal Aluminum Products
 This not to be reproduced, copied, or traced in whole or in part without our written consent.

PROJECT:	DRAWING:	DATE:
----------	----------	-------



2000 BRUNSWICK LANE
 DELAND, FL. 32724
 PHONE: 386-736-1700
 FAX: 386-822-4950