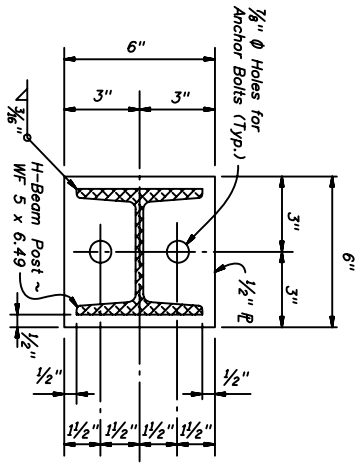
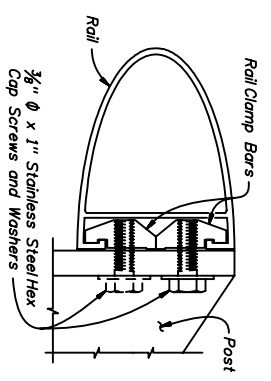


* 2 ~ 3/4" ϕ x 11" Anchor Bolts threaded full length with hex nuts and washers set in drilled holes (diameter per manufacturer's recommendation) with an Adhesive Bonding System in accordance with Sections 416 and 337 of the Specifications. Expansion Anchors are not permitted. Cutting of reinforcing steels permitted for drilled hole installation.

ALTERNATE ANCHOR BOLT DETAIL "A"
(HANDRAIL PARAPET SHOWN,
TRAFFIC RAILINGS SIMILAR)



SECTION F-F
BASE PLATE DETAIL



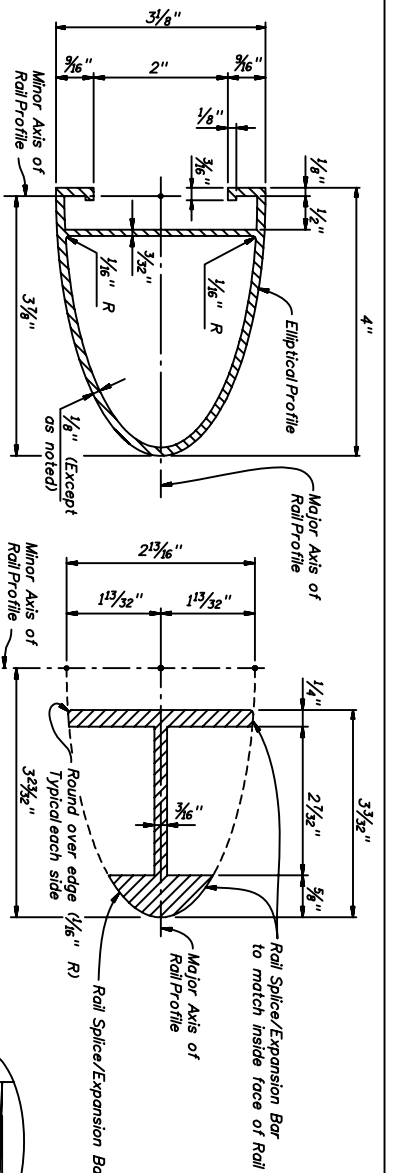
RAIL TO POST CONNECTION DETAIL

* NOTE: After nuts have been tightened, the bolt threads shall be deformed to prevent removal of nuts. Tack welding of nuts to anchor bolts, to prevent theft, is permitted. Coat deformed or tack welded threads with a galvanizing compound in accordance with Section 562 of the Specifications.

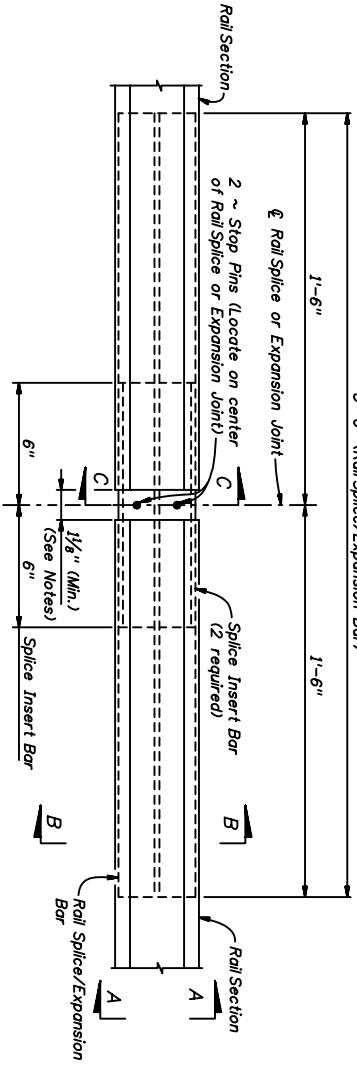


2008 FDOT Design Standards
ALUMINUM PEDESTRIAN/BICYCLE
BULLET RAILING DETAILS

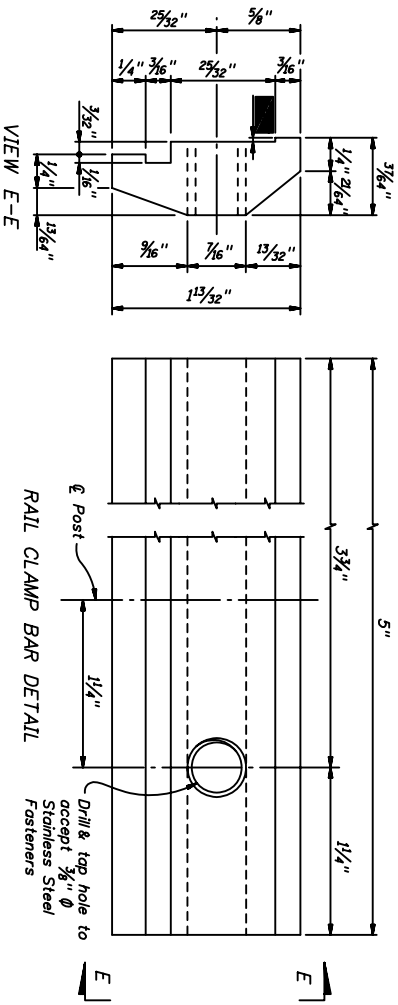
Last Revision 07/01/07
Index No. 822
Sheet No. 1 of 2



SECTION A-A (TYPICAL SECTION THRU RAIL)
SECTION B-B - RAIL SPLICE/EXPANSION BAR (RAIL NOT SHOWN FOR CLARITY)

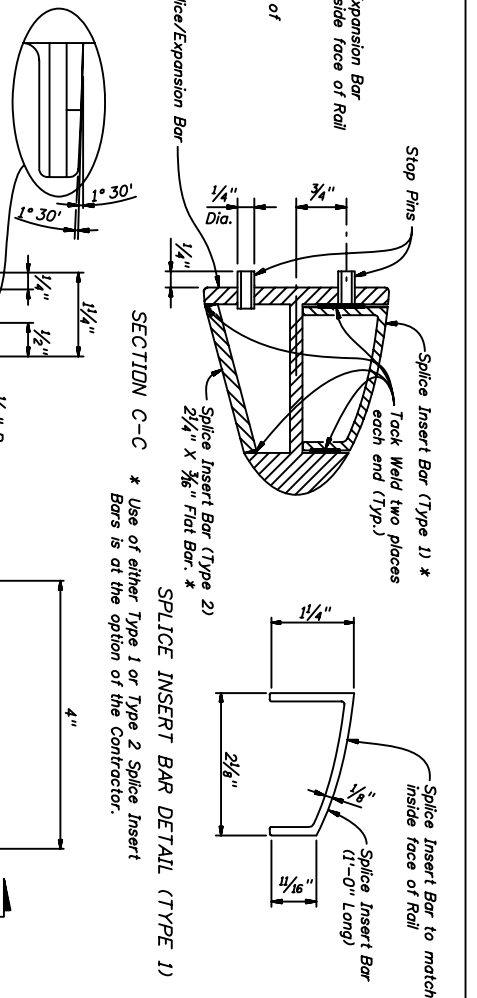


RAIL SPLICE ASSEMBLY DETAIL (TYPICAL AT BRIDGE EXPANSION JOINTS AND RAIL SPLICE LOCATIONS)



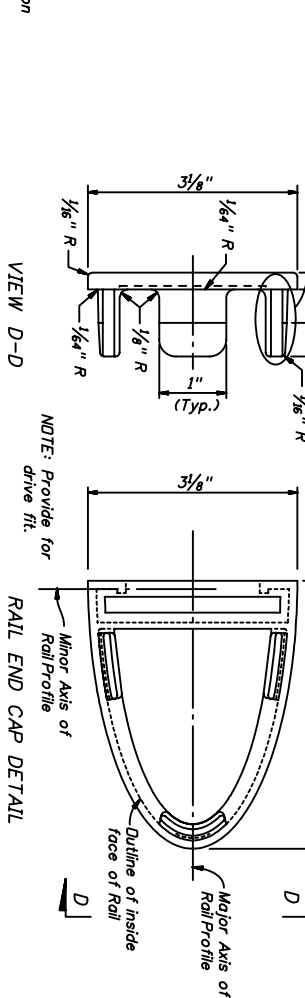
VIEW E-E

RAIL CLAMP BAR DETAIL



SECTION C-C * Use of either Type 1 or Type 2 Splice Insert Bars is at the option of the Contractor.

SPLICE INSERT BAR DETAIL (TYPE 1)



VIEW D-D

RAIL END CAP DETAIL

RAILING NOTES:

- POST ASSEMBLY: Fabricated wrought aluminum; Post - ASTM B221, alloy 6061-T6, or alloy 6351-T5; Base Plate - ASTM B209, alloy 6061-T6.
- WELDING: Welding of aluminum components shall be in accordance with ANSI and AWS D1.2 "Structures Welding Code - Aluminum."
- RAIL AND RAIL SPLICE ASSEMBLIES: Aluminum: ASTM B221, alloy 6061-T6, or alloy 6351-T5. Stop Pins shall be press-fit Aluminum or Stainless Steelpins or tubes, unless otherwise approved by the Engineer.
- RAIL CLAMP BAR: Aluminum: ASTM B221, alloy 6061-T6, or alloy 6351-T5.
- STAINLESS STEEL FASTENERS: 3/8" ϕ Hex Cap Screws and Washers shall be ASTM F-993, alloy group 2 (316). ANCHOR BOLTS: Anchor bolts shall be in accordance with ASTM A36 or ASTM F1554, Grade 36, Anchor Bolts, Nuts, and Washers shall be hot dip galvanized in accordance with Section 962 of the Specifications.
- RAIL END CAP: ASTM B26 sand cast aluminum alloy 356.0-F.
- RAIL SPLICES: Rails shall be continuous over a minimum of 3 posts, except that lengths less than 12' need only be continuous over 2 posts. Space splices at 40'-0" maximum, centers. Locate center of splice 1'-5" minimum from the edge of a post. Splice all rails in any railing section about the same center line.
- RESILIENT AND NEOPRENE PADS: Resilient and Neoprene Pads shall be in accordance with the Specifications except that testing of the finished pads is not required. Neoprene pads shall be durometer hardness 80 or 70.

2008 FDOT Design Standards

ALUMINUM PEDESTRIAN/BICYCLE

BULLET RAILING DETAILS

Limit
Revision
07/01/07

Sheet No.
2 of 2

822