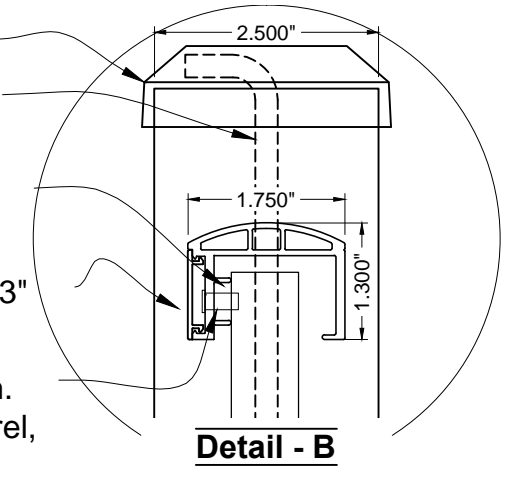
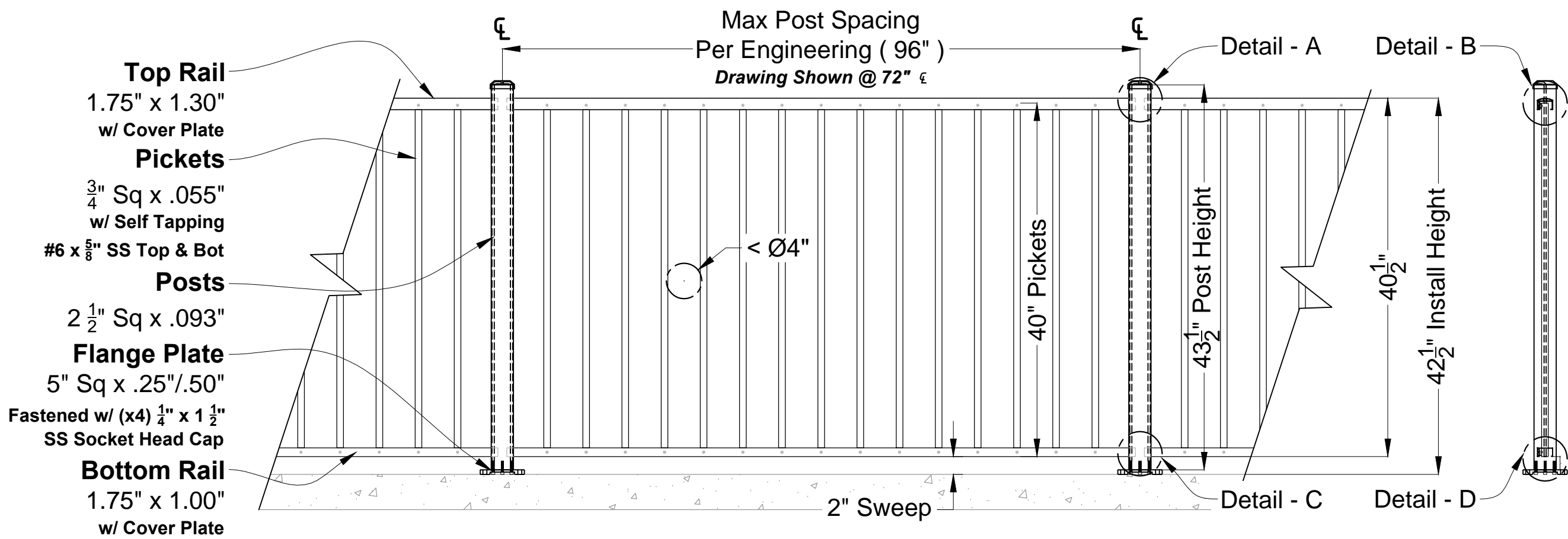
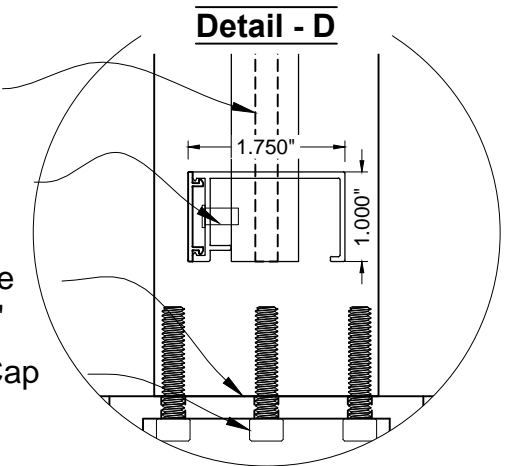


Post Cap  
Drop Rod  
Ø.22" ±  
Post Punched For Top Rail  
Post 2 1/2" Sq x .093"



**Section Elevation View**

Ø 3/16" X.25-.37 Alum. Rivet w/ Steel Mandrel, Dome Head  
Drop Rod  
Ø.22" ±  
Post Punched For Bottom Rail  
Post Flange Plate  
5" Sq x .25"/.50"  
SS Socket Head Cap  
(x4) 1/4" x 1 1/2"



DRAWING NOTES:

DO NOT SCALE DRAWINGS.  
FOR DIMENSIONS NOT SHOWN  
CONTACT THE DRAWER FOR  
CLARIFICATION



**COPYRIGHT 2013**  
Ideal Aluminum Products  
3200 Parker Drive Phone: 386.736.1700  
St. Augustine, FL 32084 Fax: 386.822.4956

ideal Mechanical Railing System

Order # \_\_\_\_\_  
Drawn By: JMixon  
Quote # \_\_\_\_\_  
Drawn Date: 29-Aug-17